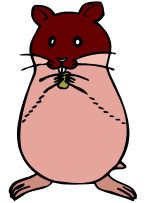


# Short and Sweet

You have been asked by a pet store company to produce a new 'small animal box'  
These boxes are given away free for customers to take home gerbils, hamsters and small birds that they have bought.

To keep costs down, the company has imposed strict rules about the 'device'.



- ◆ *It should be made from a single sheet of A3 card*
- ◆ *Any graphics on it must be in one colour only, like a black and white newspaper.*
- ◆ *There must be a logo that you design, company name and the text written on the bottom of this sheet.*
- ◆ *The animals inside must not suffocate*
- ◆ *It needs to fold flat, and have instructions on it on how to assemble the box written on the outside.*
- ◆ *The design must safely contain the animal or bird, even if tilted or lightly shaken. A suggestion from the company is that the 'device' should be capable of containing a standard mars bar or small block of softwood (Being the weight of a fat hamster and the rough size of a terrified budgie) without breaking or bursting.*

## The company suggests the following test.

Place the wrapped mars bar in the 'device'.

Move horizontally from side by side a distance of 300mm twice per second (In tests this is equivalent to an excited six year old male child 'carefully' walking home with a new pet.) with occasional 200mm movements vertically over the same time frame.

Don't forget to write all this on your box..



**Company Name:** 'Short and Sweet Ltd'

**Suggested logo:** *Happy child with happy smiling pet held close*

### **Box must have the following text printed on it:**

*"The animal / bird is supplied subject to the following conditions being met. That it is fed and watered adequately, is not subjected to crushing pressures beyond four Newton's or forces beyond 3G. If animal / bird dies within fourteen days of purchase, simply bring the receipt and the animal / bird back to the shop for a refund and a small packet of barbecue marinade courtesy of Short and Sweet"*

# Short and Sweet

To Help you design your box, cut out these SMALL MODELS and assemble them, you can base your larger design on them if you wish

